



Traffic and mobility study for an office plot

LOCATION Madrid

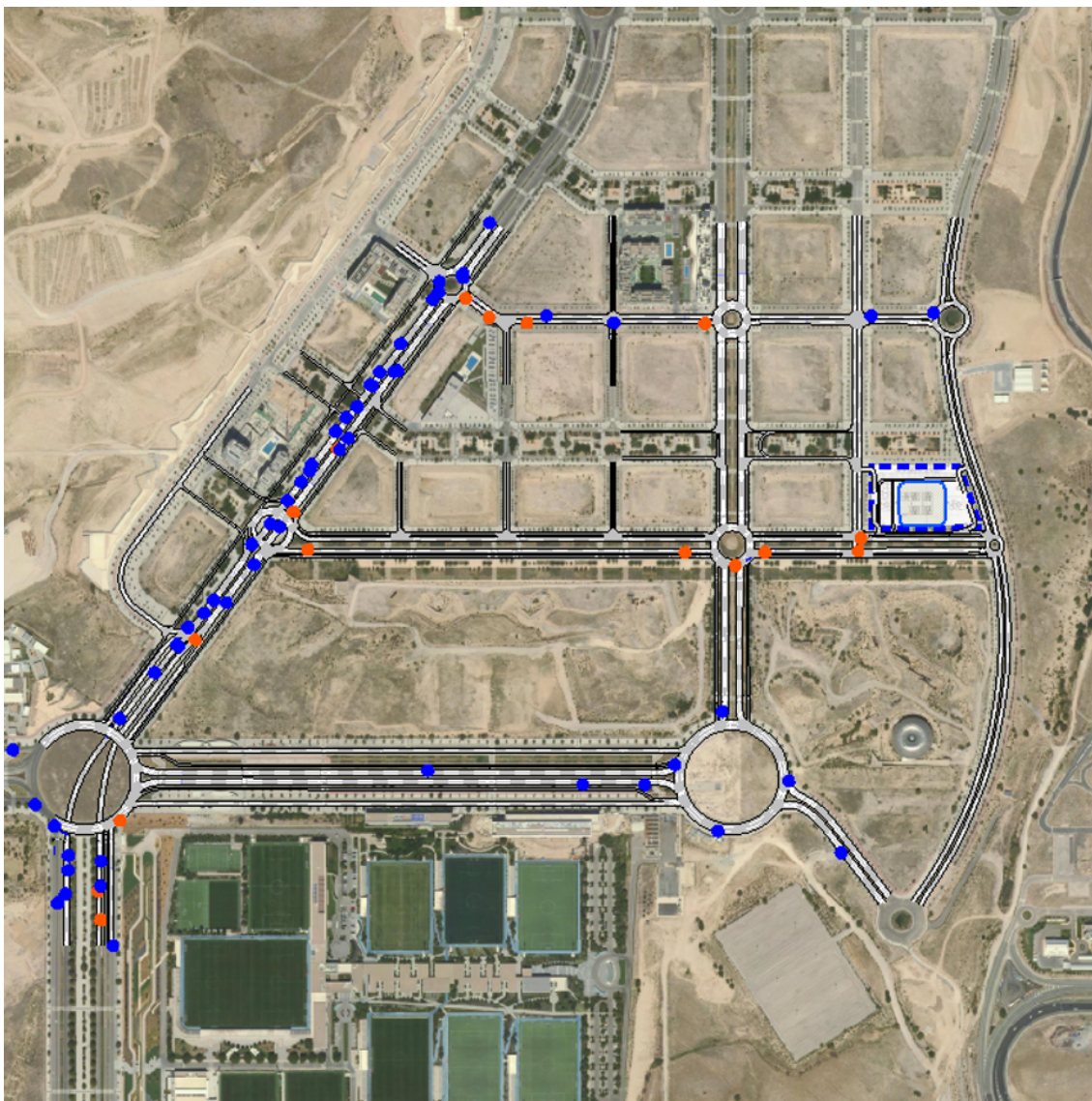
CLIENT

DATE 2020

MARKET Residential, Housing & Mix-used developments

DETAILS

- 6 artificial vision ATC surveys
- Microsimulation



In order to carry out this study of traffic and mobility of the future tertiary office building on a plot

of land in Madrid, the impact of the future mobility generated by it on the current ordinary environment has been analysed. For this purpose, field measurements were taken and an analysis was made using traffic simulation techniques. In turn, capacities were calculated using the methodology described in the 2010 version of the American Capacity Manual (Highway Capacity Manual).

The field work was the basis for the analysis and diagnosis of the current situation of the study environment, so its purpose is to obtain data from the environment that allow its evaluation. To this end, Vectio's technical staff, in coordination with the study's management, planned a capacity building campaign in different parts of the study area.

The phases that make up the field work were

- Compilation of the permanent capacity stations on the latest Traffic Map published by the Ministry of Development and the Madrid City Council.
- Carrying out directional ATC surveys at different intersections using artificial vision technology.
- Carrying out and measuring the average access times of the main routes to the study area.

The purpose of the field work was to define a basis for calculating and evaluating the current state of the environment through a simulation model and the calculation of service levels. Based on this initial analysis, the impact of the new development was evaluated and proposals for action were made to improve the overall fluidity and service level of the traffic in the area.